



Energy Intelligence

MeterMind™ - Advanced Metering Infrastructure

Product brief



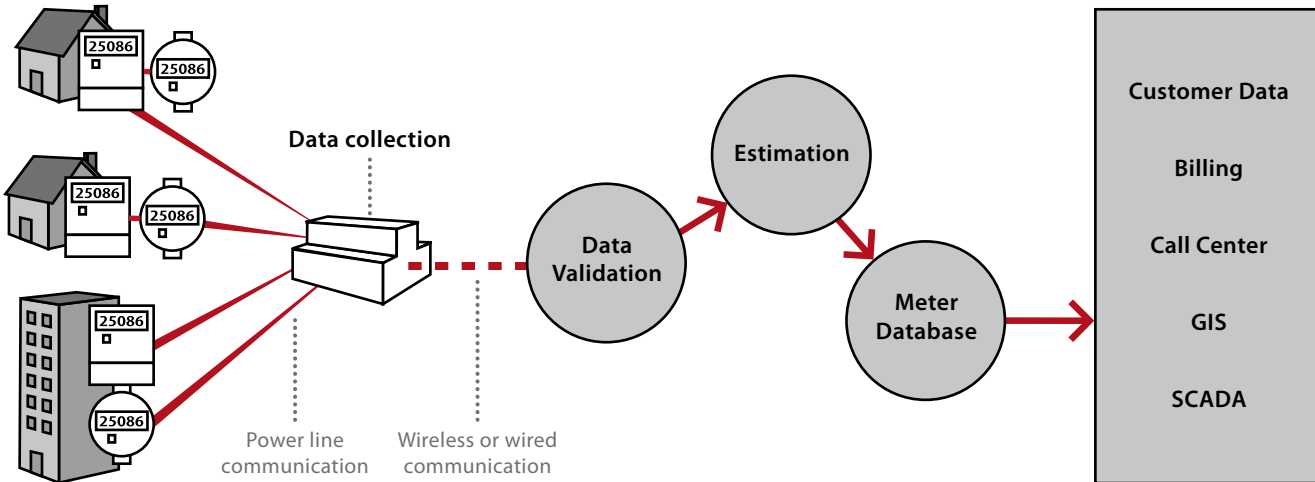
amplex



From data to valuable knowledge

Automated metering projects are not always afforded the luxury of replacing every meter with a single-vendor, AMI-integrated solution. Legacy meters, various forms of consumption, limited resources and uninterrupted services may make this impractical.

Amplex MeterMind™ is designed to collect data from a variety of meter types (electric, water, gas) produced by a variety of vendors and using a variety of protocols. Data is collected and submitted on predefined schedules via wireless or wired communications technology (e.g. GPRS and Ethernet), and integrates with standard analysis and billing workflows.



Meter data is collected from end consumers and then transmitted to the central server for further analysis, billing, etc.

A MeterMind™ solution provides all the standard AMI benefits of reduced operating costs, improved customer service, and loss minimization. These are achieved through

- Automatic data collection – without meter visits or manual data entry
- Accurate billing – based on real-time information
- Improved forecasting – and resource optimization
- Remote connection and disconnection – quickly and at no cost
- Loss Detection

The MeterMind™ solution suits all network configurations regardless of meter type, deployment size and topography. With unlimited scalability and a modular structure, it can be installed in stages according to needs. Multiple built-in communication options ensures the system is quick and affordable to install. Two-way communication ensures easy operation, featuring remote updates and automatic discovery of new units. With MeterMind™, you can benefit from:

- Easy installation with integration to meters from most manufacturers
- No new major wiring - 'plug and play'
- Quick commissioning with advanced field tools
- Many meters to one concentrator keeps costs down

The MeterMind™ solution is an excellent stand-alone system for customers that want to actively use consumption data to gain insight and savings. With integration to the GreenWise™ energy management system and the StartGrid™ solution for low voltage substation monitoring, MeterMind™ becomes an integral part of the Amplex smart grid vision. Whether you are a utility, a large property owner, or a distributed organization, a combination of Amplex solutions can provide a holistic approach to your energy management needs.

Focusing on accurate, reliable data collection, MeterMind™ has been rolled out in a large project encompassing 200,000 water and electricity meters. Contact us to learn more about the field survey, installation and commissioning experiences we gained from this project.

